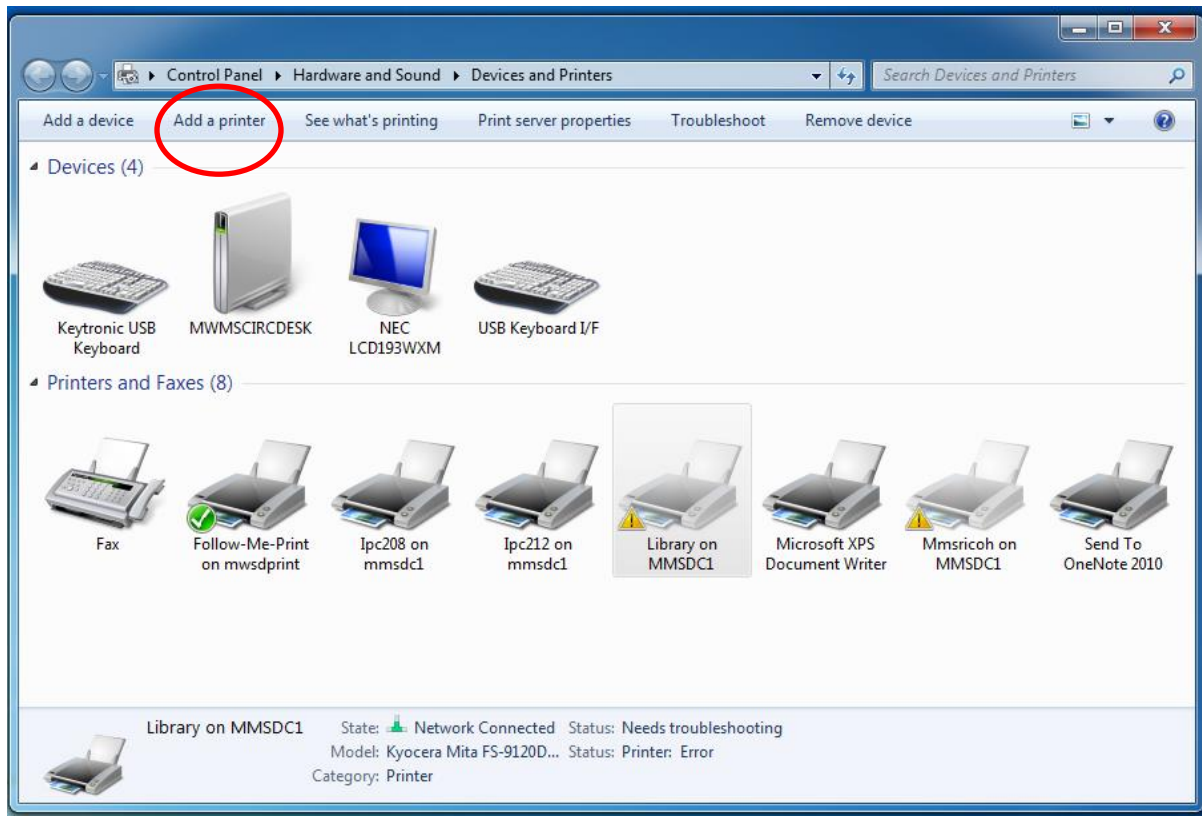


Installing a Printer

1. Control Panel >Hardware and Sound >Devices and Printers
2. Add a Printer



3. Add a Network or Bluetooth Printer

Make sure that your computer is connected to the network, or that your Bluetooth or wireless printer is turned on.

4. Next
5. Choose >

Follow-Me-Print on MWSDPRINT

6. Next

7. Control Panel >Hardware and Sound >Devices and Printers
Right-click on Printer icon and Choose "Set as default printer"